

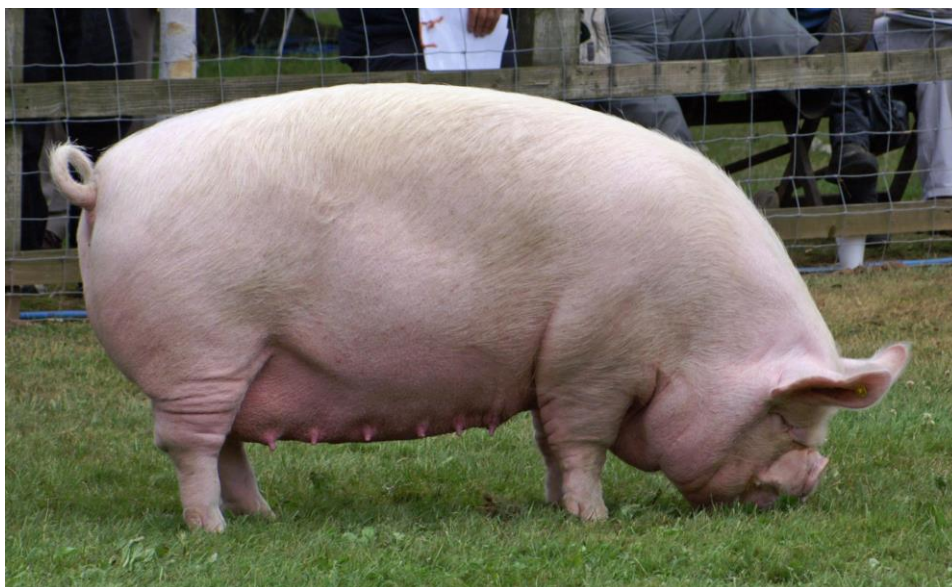


HOROWHENUA AP & I ASSOCIATION

Horowhenua
Chronicle
LOVE THIS PAPER - LOVE THIS PLACE

NZME
NEW ZEALAND
MEDIA AND
ENTERTAINMENT

2019 SHOW



PIG SCHEDULE

Saturday 19th January 2019
Entries Close Monday 7th January 2018

Secretary:
Jo Wells
PO Box 59
LEVIN

Phone: (06) 3686539
Fax: (06) 3686549
E-mail: horowhenua@xtra.co.nz
Website: www.levinapishow.co.nz

PIGS

TO BE JUDGED ON SATURDAY 19th JANUARY 2019 (NO LATE ENTRIES WILL BE ACCEPTED)

All Stock for Exhibition MUST be in its proper place and ready for judging by 9.00am Saturday. All entries in Purebred Classes must be registered or eligible for registration. All Pedigree Pigs must be able to be identifiable.

In the Horowhenua Show you should have owned the pig for two months and had in your possession.

In the Sow classes the sow should have farrowed 4 months prior to the Show. Junior exhibitor can put their pig in pedigree classes in their name because it is their pig not the parent.

ALL BOARS OVER 12 MONTHS MUST BE DETUSKED (No more than 3 weeks prior to Show)

No entry eligible for competition unless name of exhibit and farrowing dates stated on Entry Form in Pedigree Classes only.

No pigs allowed to compete in more than one class except for classes where otherwise specified.

In classes for Pedigree Sows over 12 months if the Sow farrows before being judged she is eligible for this class and may also be entered in class for Sow with Litter. In Pedigree classes Sow with Litter may be entered in class for Sow over 12 months. Farrowing dates must be given on entry form where required.

The Estate of the late John Kebbell Esq. presents for perpetual competition a Silver Challenge Cup for most points gained in the Pig Section

Champion and Reserve Champion Ribbons will be awarded.

The John Morgan Memorial Cup for most points in Berkshire Pig Classes.

Horowhenua AP & I Assn Challenge Cup for most points Purebred pigs won outright by Mr EW Harrison in 1955 and re-donated.

BE Judd has donated a Shield which will be awarded to the Supreme Champion Pig of the Show.

KJ & JPM Greig have donated a trophy to be known as the "Riverland Cup" and awarded to the Best Pig aged 6-12 months over all breeds. This cup is to be won outright by the same exhibitor 3 times in succession or 5 times at intervals.

The Peck Family have donated a trophy to be known as the "CJ Peck Memorial Trophy" awarded to the Best Pig aged under 6 months over all breeds.

ADDITIONAL PRIZE MONEY WILL BE PAID OF \$50

Supreme Champion \$25 Junior Champion and \$25 to the Champion Pig over 6 and under 12 months.

Prizes in all classes (except where otherwise stated)

First \$8.00 Second \$6.00 Third \$4.00

Entry Fee: \$7.00 (includes GST)

Administration Fee \$6.00

YOUNG HANDLERS – ALL BREEDS

Saturday, 19th January 2019

1. The pig can be either pedigree or grade.
2. The exhibitor does not have to own the pig
3. Only one entry per exhibitor
4. Pigs from these classes are eligible to be entered in other classes in the show that they are eligible for.
5. The pig must be clean and tidy, well presented.

The classes will be judged purely on the handling of the pig, presentation and the exhibitor's knowledge about the pig, breed, what it is fed and how it is housed etc.

500 JUNIOR EXHIBITOR UNDER 5 YEARS

To be exhibited by a competitor under the age of 5 years. Pig must be under 6 months at the time of Show. This enables child to show same pig in one show season.

501 JUNIOR EXHIBITOR 5 – 12 YEARS

*To be exhibited by a competitor between the age of 5 - 12 years.
Pig can be any age.*

502 INTERMEDIATE EXHIBITOR 12 – 15 years

*To be exhibited by a competitor between the ages of 12 – 15 years.
Pig can be any age.*

BERKSHIRE

- 503 BOAR over 18 months
- 504 BOAR over 12 months and under 18 months
- 505 BOAR over 6 and under 12 months
- 506 BOAR under 6 months
- 507 SOW over 18 months
- 508 SOW over 12 and under 18 months
- 509 SOW over 6 and under 12 months
- 510 SOW under 6 months

LARGE WHITES

- 511 BOAR over 18 months
- 512 BOAR over 12 and under 18 months
- 513 BOAR over 6 and under 12 months
- 514 BOAR under 6 months

- 515 SOW over 18 months
- 516 SOW over 12 and under 18 months
- 517 SOW over 6 and under 12 months
- 518 SOW under 6 months

LANDRACE

- 519 BOAR over 18 months
- 520 BOAR over 12 and under 18 months
- 521 BOAR over 6 and under 12 months
- 522 BOAR under 6 months
- 523 SOW over 18 months
- 524 SOW over 12 and under 18 months
- 525 SOW over 6 and under 12 months
- 526 SOW under 6 months

SADDLEBACK

Saturday, 19th January 2019

Pig Pens

- 527 BOAR over 18 months
- 528 BOAR over 12 and under 18 months
- 529 BOAR over 6 and under 12 months
- 530 BOAR under 6 months
- 531 SOW over 18 months
- 532 SOW over 12 and under 18 months
- 533 SOW over 6 and under 12 months
- 534 SOW under 6 months

DUROC

Saturday, 19th January 2019

Pig Pens

- 535 BOAR over 18 months
- 536 BOAR over 12 and under 18 months
- 537 BOAR over 6 and under 12 months
- 538 BOAR under 6 months
- 539 SOW over 18 months
- 540 SOW over 12 and under 18 months
- 541 SOW over 6 and under 12 months
- 542 SOW under 6 months

HAMPSHIRE
Saturday, 19th January 2019

Pig Pens

- 543 BOAR over 18 months
- 544 BOAR over 12 and under 18 months
- 545 BOAR over 6 and under 12 months
- 546 BOAR under 6 months
- 547 SOW over 18 months
- 548 SOW over 12 and under 18 months
- 549 SOW over 6 and under 12 months
- 550 SOW under 6 months

LARGE BLACKS

- 551 BOAR over 18 months
- 552 BOAR over 12 and under 18 months
- 553 BOAR over 6 and under 12 months
- 554 BOAR under 6 months
- 555 SOW over 18 months
- 556 SOW over 12 and under 18 months
- 557 SOW over 6 and under 12 months
- 558 SOW under 6 months

ANY OTHER BREEDS/KUNE KUNE

- 559 BOAR over 18 months
- 560 BOAR Over 12 and under 18 months
- 561 BOAR over 6 and under 12 months
- 562 BOAR under 6 months
- 562.1 SOW over 18 months
- 562.2 SOW over 12 and under 18 months
- 562.3 SOW over 6 and under 12 months
- 562.4 SOW under 6 months

ALL BREEDS PROGENY CLASS

All animals entered in this Class MUST be entered in other Purebred Classes where eligible

- 563 BOAR (any age) and Two Progeny

- 564 SOW (any age) and Two Progeny
 565 ALL BREEDS PUREBRED SOW
With a litter of not less than 8 pigs no more than 8 weeks old.
 566 SENIOR BREEDING GROUP
2 Sows over 12 months of age, one to have farrowed at least one litter, and 1 Boar over 12 months of same breed
 567 JUNIOR BREEDING GROUP
2 Sows and 1 Boar under 6 months of the same breed

CROSSBRED AND GRADE SECTION

The S Gimblett Cup has been donated for perpetual competition for the winning entry in Class 571.

- 568 SOW (any age)
 569 Litter Of Pigs Of Not Less Than 8 Pigs
Age not to exceed eight weeks at date of Show (Litters in Class 570 may be entered in this class)
 570 SOW with litter of not less than 8 pigs
Age not to exceed eight weeks at date of Show. To be judged together. Entries in this class are eligible for class 571.
 571 Maiden Sow Up To 8 Months
 572 SOW with maiden litter
of not less than 8 pigs, age not to exceed eight weeks at date of Show.

PORKERS AND BACONERS

Mr and Mrs KW Shaw have donated a Cup to known as the "Stratherrick Cup" for the most points in Class 573 to be won 3 years in succession or 5 times at intervals.

- 573 ONE PIG most suitable for pork
 HOOF PRIZE
 574 ONE BACONER PIG most suitable for local market
 HOOF PRIZE

